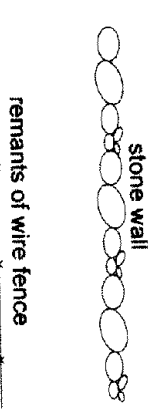


APPROVED BY THE MADBURY PLANNING BOARD

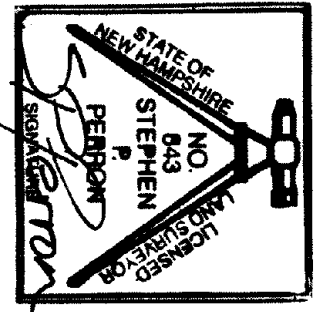
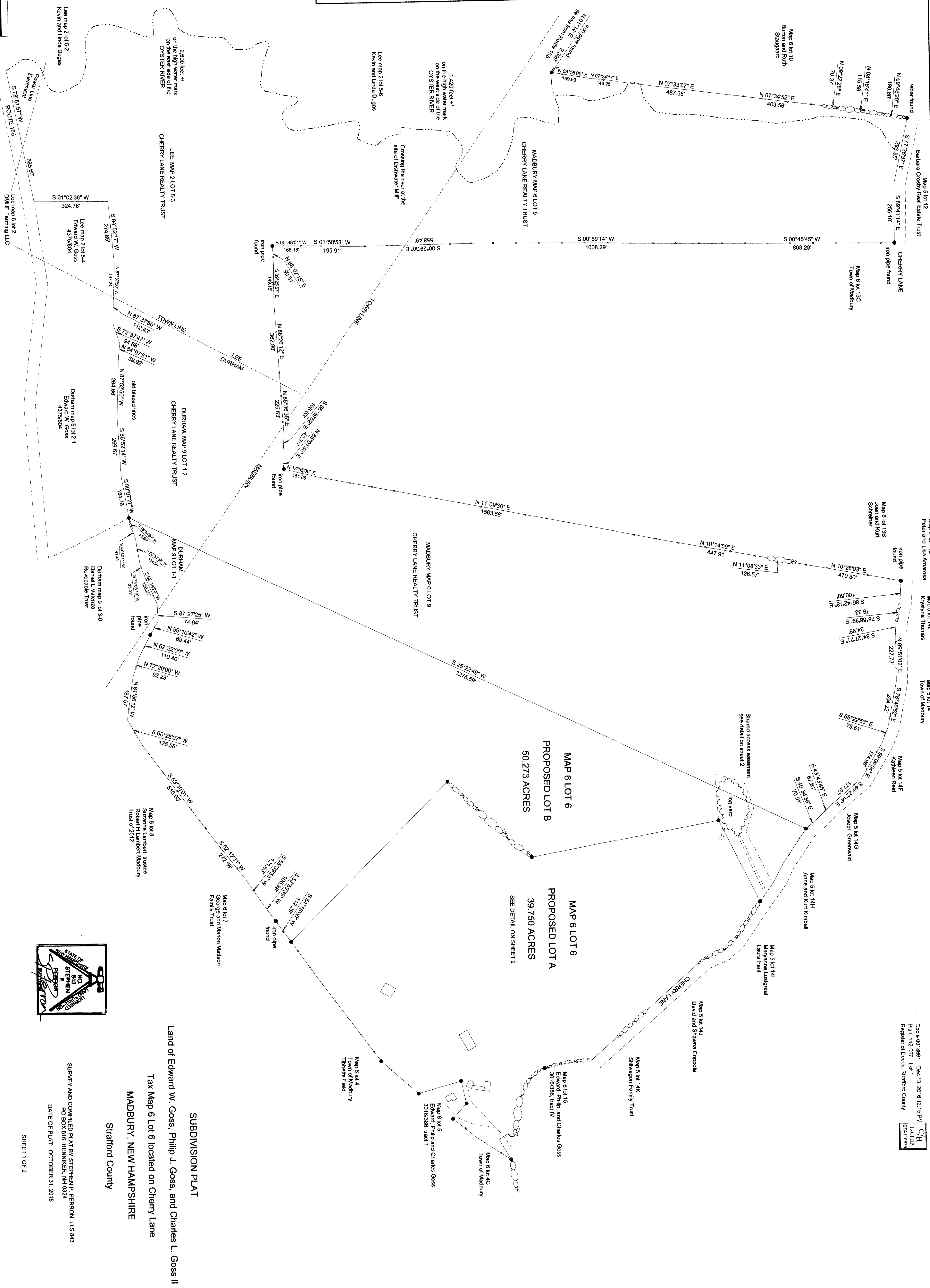
*Frederick W. Goss*

*12-13-16*

LEGEND:



SCALE: 1 INCH = 200 FEET



SURVEY AND COMPLETION PLAT BY STEPHEN P. PERRON, L.S. 643  
PO BOX 816, HENNINGER, NH 0324  
DATE OF PLAT: OCTOBER 31, 2016

Land of Edward W. Goss, Philip J. Goss, and Charles L. Goss II  
Tax Map 6 Lot 6 located on Cherry Lane  
MADBURY, NEW HAMPSHIRE  
Stratford County

SUBDIVISION PLAT

SHEET 1 OF 2

Doc # 0019861 Dec 13, 2016 12:15 PM  
Plan 112-507 1 of 1  
Register of Deeds, Stratford County  
C/H  
L-CTDP  
STATIONS